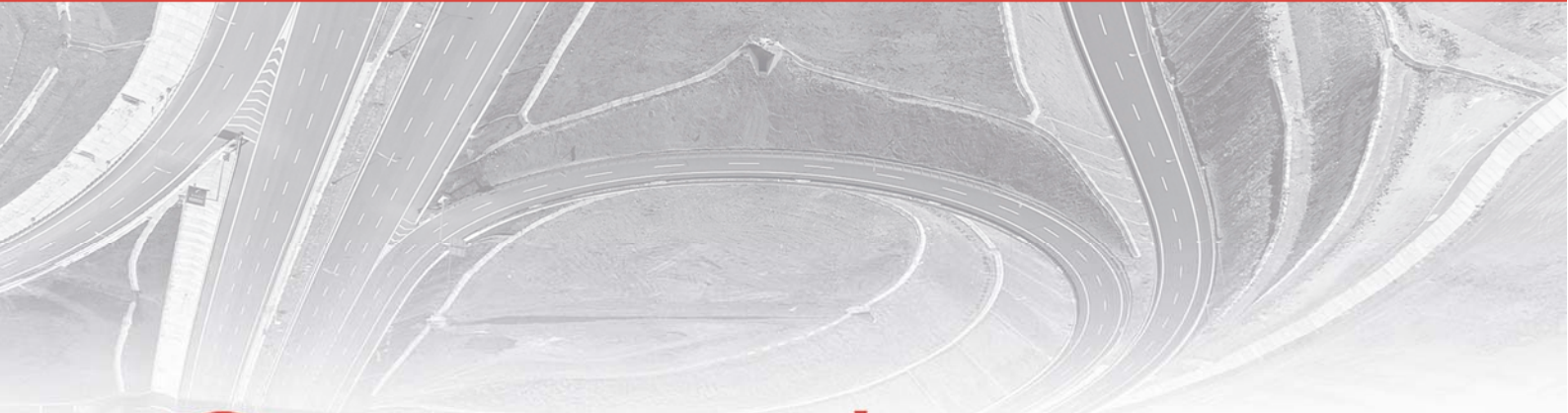


*From past to the future with confidence...*



Tanjant Engineering & Consultancy Inc.  
[www.tanjantmuhendislik.com](http://www.tanjantmuhendislik.com)



# COMPANY INTRODUCTION CATALOGUE

## COMPANY PROFILE

Tanjant Engineering and Consultancy Inc. was established in Ankara in February 2011 in order to take a position on especially highway and railway etude project engineering services , company is founded by civil engineers who have many years of experience in transportation and infrastructure projects.

In a very short and intensive period since the establishment of the company, Tanjant Engineering has signed many projects as a subcontractor and has started to participate in the tenders of official institutions and boards since the beginning of 2012.

The company's goals are to further strengthen its structure with its developing technical and administrative staff and to be able to play a role in important projects both domestic and abroad. Our main aim is to keep customer satisfaction at the forefront by bringing years of experience to the forefront and to produce quality, technological and economic solutions in line with our engineering principles.

## MISSION

To provide our knowledge and experience in the sector to the service of our customers in the highest quality and hassle-free way, both with our different points of view and with our applicable different projects.

## OUR VISION

To be a world-class company that directs advanced technologies, quality and design in project creation, keeps customer satisfaction at the highest level and is trusted by all.

## QUALITY POLICY



*Bu Belge ile*

**Tanjant Mühendislik Ve Müşavirlik A.Ş.**

**Mutlukent Mh. 2065 Sok. D. Konut Apt. No:6  
Çankaya/ANKARA  
TÜRKİYE**

*Firmasının*

**TS EN ISO 9001:2015**

*şartlarına uygun bir Kalite Yönetim Sistemine  
aşağıda belirtilen kapsam dahilinde sahip olduğunu onaylar*

**Ulaşım (Karayolu Ve Demiryolu), Yapı Sanayi Tesisleri, Altyapı, Üstyapı  
Tesisleri İçin Projelendirme, Danışmanlık Ve Müşavirlik Hizmetleri**

Kategori / Alt Kategori :---  
Belge No :K-5280  
Belge İlk Yayın Tarihi :10 Ağustos 2020  
Karar Tarihi :10 Ağustos 2020  
Belge Yayın Tarihi :10 Ağustos 2020  
Geçerlilik Tarihi :09 Ağustos 2021

Bu belge, firmamız UKS'in Belgelendirme Kuruluna ağırlıklı ve  
yeterli ve en az 1 kez yapılacak süreçten derinlemesine baskın olarak halinde  
bu belgelendirmeye karar veya yeniden belgelendirmeye karar olan karar tarihinden itibaren  
süre boyunca geçerlidir.  
UKS Türkiye, Türkiye'de AK 5616'da Belirli Tarihli 14.03.2018'den itibaren.



Genel Müdür



[www.ukselbelendirmem.com.tr](http://www.ukselbelendirmem.com.tr)

Belgenin geçerlilik durumu <http://www.ukselbelendirmem.com.tr> adresinden kontrol edilebilir.

UKS Uluslararası Kalite Sistemleri Ve Belgelendirme Ltd. Şti.  
Anadoluhisari Mah. Bilek Cad. No:35 Ümraniye / İSTANBUL  
Telefon: +90 216 330 45 77 Pbx Faks: +90 216 330 47 47  
info@ukselbelendirmem.com.tr

- To be a reliable and sought-after company in an understanding that fully meets the needs and expectations of the customer in all processes,
- To follow and implement technological developments closely in order to reduce costs and increase profitability,
- In order for all employees to become more competent and able to use their abilities at the highest level within the framework of quality systems, to constantly increase the quality level by giving importance to teamwork,
- To establish awareness of quality, environment and occupational safety in all employees,



- To cooperate with suppliers and suppliers based on trust,
- Moving our existing technical, administrative and financial savings abroad to serve the purpose of announcing the name of our company and Turkey to the world more,
- To prevent the improprieties that may arise later by producing the most appropriate, the most accurate and the most economical solutions,
- Complete each project on time, fully compatible with the project with the highest level of techniques, with the desired quality and within the budget limits,
- Be a model organization that respects the society and environment in which we are located and
- By constantly improving its business volume, it has determined to contribute to the country's economy as a Quality Policy.

## SERVICE AREAS

### TRANSPORTATION SYSTEMS

- TRANSPORTATION SYSTEMS
- MOTORWAYS
- STATE AND PROVINCIAL ROADS
- JUNCTIONS
- RAILWAYS
- URBAN PUBLIC TRANSPORT SYSTEMS

### STRUCTURES

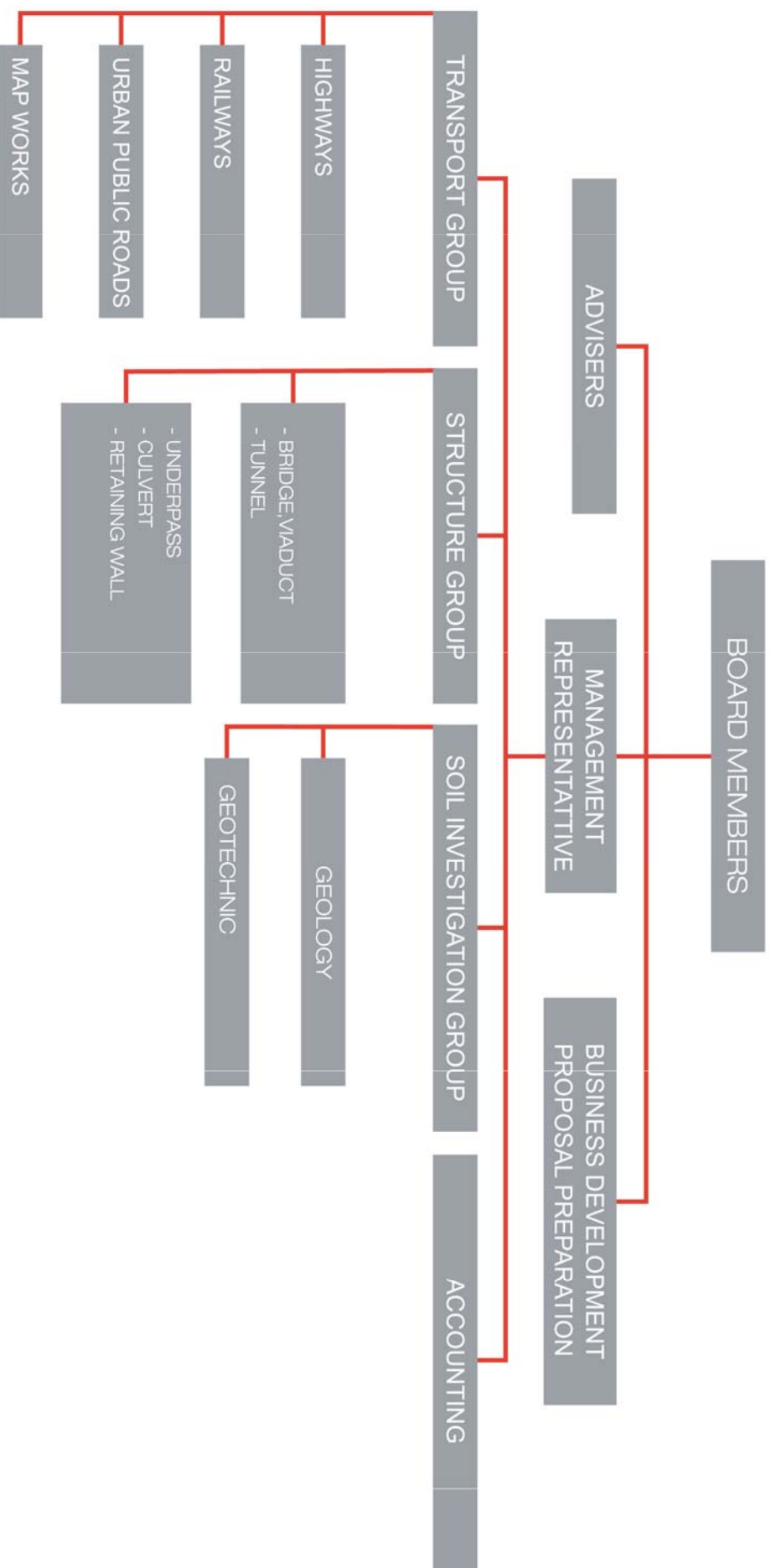
- ROAD BRIDGES AND VIADUCTS
- TUNNELS
- HIGH-SPEED RAIL BRIDGES AND VIADUCTS
- OPEN AND CLOSE TUNNELS
- CULVERTS
- RETAINING STRUCTURES
- METRO STATIONS
- SUPERSTRUCTURES

### MAP WORKS

### SOIL INVESTIGATION STUDIES

- GEOLOGICAL AND GEOTECHNICAL STUDIES
- GEOTECHNICAL STUDIES

## ORGANIZATION CHART





# ONGOING PROJECTS



## Ankara-Niğde Highway

### Etude Project Engineering Services

**Employer:** Erg Otoyol Yatırım ve İşletme AŞ.

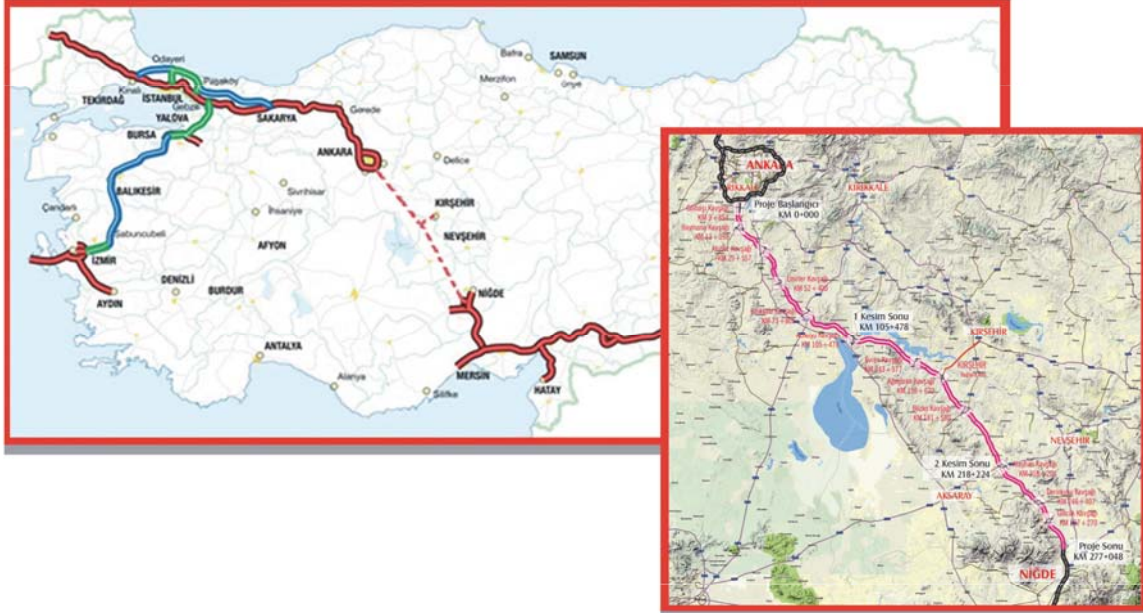
**Approval Authority:** General Directorate of Highways 4th Regional Directorate

With in the scope of the project, a total of 330 kilometers alignment, including 275 kilometers of highway main route and 55 kilometers of connection roads; surveying, horizontal and vertical alignment design, creation of 1/5000, 1/1000 scaled plan-profiles, drainage project, hydraulic and hydrologic calculations ,soil investigation studies engineering services, viaducts, bridges, underpasses, overpasses, box culverts, and retaining wall projects,infrastructure displacement projects, landscaping projects, lighting projects, junction projects, link road projects , structural design projects, fence projects, traffic safety projects, infrastructure projects and displacement-as built project services have been performed.

Route Ankara, Kırşehir, Aksaray and Nevşehir provinces within the borders of the 2x3-lane Ankara-Niğde highway route, the traffic-open Ankara Perimeter Highway south of the District of Gölbaşı west of the Pilgrim Village begins. Following the west of the current State Road, the route crosses to the East, intersecting the State Road at Ahiboz Junction. It extends southwards from the region bounded by Salt Lake in the West and Hirfanli Dam Lakes in the East. Aksaray-Kırşehir State Road (0757) Steppe Junction, Aksaray-Nevşehir State Road (0300) Alayhan Junction connection to the continuing route, the current Gölcük-2 Bridge Junction completed construction and opened to traffic Gölcük-Pozantı highway ends. Sections of the highway between Ankara and Niğde;

- Between Ankara-Acıkuyu Intersections (Section-1)
- Between Acıkuyu Intersection - Alayhan Intersection (Section-2)
- Between Alayhan Intersection- Gölcük Intersection(Section-3) , it is planned as.





### Summary of major structures with in the scope of the project

	Piece	Total Length (m)
Viaducts	5	3567.00
Bridges	50	2407.00
Overpasses	74	4310.00
<b>TOTAL</b>	<b>129</b>	<b>10284.00</b>



### List of junctions along the route

JUNCTION NAME	KM
Ankara Peripheral Motorway Junction	Beginning of the Project
Hacılar Junction	2-139.671
Gölbaşı Junction	3+860.000
Main Control Center Junction	11+780.000
Haymana Junction	13+098.000
Karagedik Junction	19+619.000
Ahiboz Junction	30+249.000
Emirler Junction	51+880.000
Kulu Junction	73+805.000
Acıkuyu Junction	105+226.000
Evren-Sarıyahşi Junction	143+577.000
Ağaçören Junction	159+673.000
Bozkır Junction	182+586.000
Alayhan Junction	218+250.000
Derinkuyu Junction	246+407.000
Çiftlik Junction	257+271.000

### List of highway maintenance centers located on the route

MOTORWAY MAINTENANCE CENTERS	KM
Gökçekhöyük Maintenance Center	12+600.000
Ahiboz Maintenance and Operation Center	30+600.000
Kulu Stock and Salt Warehouse	74+500.000
Acıkuyu Maintenance Center	105+600.000
Ağaçören Maintenance and Operation Center	160+400.000
Alayhan Maintenance and Operation Center	218+200.000
Niğde Stock and Salt Warehouse	273+150.000

### List of highway service facilities located on the route

MOTORWAY SERVICE FACILITIES	KM
Gökçekhöyük Service Facility	10+544.000
Emirler Service Facility	46+870.000
Sofular Service Facility	69+436.000
Tuz Lake Service Facility	94+900.000
Hirfanlı Service Facility	124+996.000
Boğazköy Service Facility	151+815.000
Bozkır Service Facility	179+005.000
Alayhan Service Facility	214+000.000
Gülpınar Service Facility	229+717.000
Bağlama Parking Area	260+390.000

**List of viaducts on the route**

Viaduct Name	Starting Km	Ending Km	Length (m)
Gölovası	16+885.000	17+574.200	662.20
Derekişla	59+815.000	60+316.700	501.70
Sofular	71+214.200	71+885.200	671.30
Bozkır	179+620.000	180+679.100	759.80
Kızılırmak	16+430.000	17+402.000	972.00
<b>Total Length(m)</b>			<b>3657.20</b>

**List of underpasses on the route**

Underpasses	
Dimensions	Piece
4x4 Agricultural Underpass	3
5x5 Agricultural Underpass	44
7x5 Underpass	45
9x5 Underpass	6
9x5.5 Underpass	2
12x5.5 Underpass	18
12x6.5 Underpass	2
15x6 Underpass	1
<b>Total</b>	<b>121</b>

**List of hydraulic culverts on the route**

Hydraulic Culverts	
Dimensions	Piece
Ø 1000 Pipe Culvert	1
Ø 1400 Pipe Culvert	47
Ø 2000 Pipe Culvert	1
1.0x1.5 Box Culvert	2
1.5x1.5 Box Culvert	2
1.5x2.0 Box Culvert	83
2.0x2.0 Box Culvert	329
2.5x2.0 Box Culvert	1
2.5x2.5 Box Culvert	78
3.0x2.5 Box Culvert	7
3.0x3.0 Box Culvert	76
4.0x3.0 Box Culvert	8
4.0x4.0 Box Culvert	51
5.0x3.0 Box Culvert	2
5.0x4.0 Box Culvert	4
5.0x5.0 Box Culvert	7
9.0x5.0 Box Culvert	1
<b>TOTAL</b>	<b>700</b>



KO Ankara Peripheral Motorway Starting Point Junction



Hacilar Junction



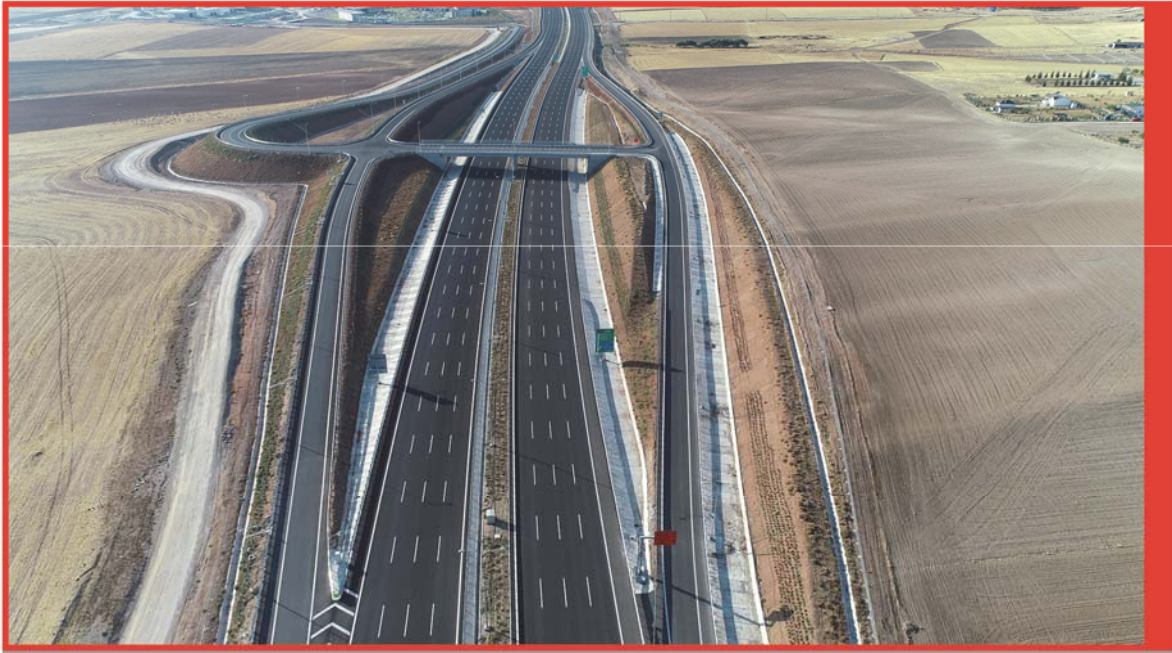
Km: 3+860 Gölbaşı Junction



Km: 5+200 Overpass Bridge



Km: 10+564 Highway Service Facility



Km: 11+780 Main Command Center Junction



Km: 13+098 Haymana Junction



Km: 16+124 Main Toll Plaza





Km: 25+000 Trench Cut



Km: 27+500 Overpass Bridge



Km: 30+249 Ahiboz Junction



Km: 32+592 Soğulcak Bağı Village Underpass



Km: 41+164 Koçyayla-Ahmetçayırı Village Underpass



Km: 51+880 Emirler Junction



Km: 52+500 Retaining Wall At Cut Section



Km: 59+000 Derekişla Viaduct



Km: 71+500 Sofular Viaduct



Km: 246+400 Derinkuyu Junction



Km: 251+000 Overpass Bridge



Km: 257+000 Çiftlik Junction



Km: 264+000

## Sinop-Ayancık-15.BI.Hd. Etude Project Engineering Service

**Employer:** General Directorate of Highways

**Approval Authority:** General Directorate of Highways 7th Regional Directorate

With in the scope of the project, approximately 48 kilometers of divided road route mapping, soil research engineering services, EIA, Engineering Services, study, corridor, horizontal and vertical alignment design, preparation of hydraulic and hydrologic study report, number of 22 levelled and non levelled interchange design, preliminary and final design of 1 bridge and 3 Tunnels, preparation of BOQ and final projects, drainage project ,for the preparation of traffic safety projects services have been performed.





# COMPELETED PROJECTS



## **(Türkeli-Ayancık) Separation - (Sinop-Boyabat) Separation - Erfelek Highway Relocation Project**

**Employer:** Uğur-Tinsa Joint Venture

**Approval Authority:** General Directorate of Highways

With in the scope of (Türkeli-Ayancık) Separation - (Sinop-Boyabat) Separation - Erfelek Highway Relocation Project between Km:16+441.91 and & Km:23+708.02, approximately 7.3 kilometres of rural highway's horizontal and vertical alignment design, creation of cross sections, volume calculations and drainage projects were completed.



## **Hacıhamza-Osmancık Highway Relocation Project**

**Name of the Project:** Hacıhamza-Osmancık Highway Relocation Project

**Employer:** Statkraft Enerji A.Ş.

**Approval Authority:** Statkraft Enerji A.Ş.

With in the scope of the project, the generation of the revised cross sections, generation of plan-profile drawings and updated volume calculations were completed for approximately 9.1 kilometers of total alignment.

## **Sinan-Batman Railway Studies and Engineering Services Project**

**Name of the Project:** Sinan-Batman Railway Etude Project Engineering Services Project (Km:0+000 – Km:6+528.659)

**Employer:** A1 Architecture Engineering Ltd.

**Approval Authority:** DLH General Directorate of Infrastructure Investments, Railways Department Presidency of Etude Project.

With in the scope of the project, the survey mapping of the project area, the horizontal and vertical design of the approximately 6.5 kilometres of single line railway, preperation of the hydrolic-hydrological design report, design of a bridge having length of 1430 meters length design of a 10x6 dimensioned highway underpass,

reinforced concrete calculations of the hydraulic culverts, soil investigation engineering services including field studies (drilling, test pits, site expriments), geological and geotechnical reports, generation of the cross sections , volume and mass-haul calculations with quantity and cost estimation reports, final design report services were completed.



## **İnönü-Köseköy Rail Project (Dogançay of Ripaj)**

**Name of the Project:** İnönü-Köseköy Railway Project Etude Project Engineering Services

**Employer:** KMG Müh.Müş.Bil.Tek.Ltd.

**Approval Authority:** General Directorate of State Railways

With in the scope of the project, the revized horizontal and vertical alignment design of the section between Km:130+400 – Km:143.817 871 , generation of the cross sections, volüme calculations were completed.

## **Polatlı-Afyon Railway Project Mass-Haul Optimization**

**Name of the Project:** With in scope of Polatlı-Afyon Railway construction tender mass-haul optimization studies

**Employer:** San Consultancy

**Approval Authority:** Astaldi SPA

With in the scope of the project, condidering availability of the cut materials and borrow pits mass-haul diagram balance and earthwok optimization studies were completed.

## **Kadirli-Sumbas Rural Highway Etude Project Engineering Services**

**Employer:** Sar Engineering Construction Ltd.

**Approval Authority:** General Directorate of Highways,5th Regional Directorate

Related Project has been designed as 6 kilometer of divided highway and 4 kilometer of rural highway. With in the scope of the project, the design of horizontal and vertical alignment, preparation of hydraulic-hidrological design report, drainage project, volume and mass-haul calculations, generation of plan-profile drawings, preparation of cover and typical drawings were prepared.



## **Laleli Dam Bayburt-Ispir Highway Etude Relocation Project**

**Employer:** Akfen Energy Inc.

**Approval Authority:** General Directorate of Highways,10th Regional Directorate

Tanjant-Petra-Sar Joint Venture has been approved by General Directorete of Highways with in the scope of Laleli Dam construction design facilities .1/25000 and 1/1000 scaled horizontal and vertical alignment alternative studies, hydraulic and hyralogical studies were completed and submitted to the 10th Regional Directotare of General Directorete of Highways.

## **Edremit-Gevaş Highway Etude Project Engineering Services**

**Employer:** Sar Engineering Construction Ltd.

**Approval Authority:** General Directorate of Highways, 11th Regional Directorate

With in the scope of the project, horizontal and vertical alignment alignment design of 22 kilometers highway,hydraulic-hydralogical etude report, 6 non-levelled interchange design were designed.



## **Yenifoça-(Menemen-Aliğa) Seperation Highway Etude Project Engineering Services**

**Employer:** Aksa Consultancy Co. Ltd.

**Approval Authority:** General Directorate of Highways,2nd Regional Directorate

With in the scope of the project, the final design of 13.7 kilometers alignment, drainage project, traffic markingp project, 5 non-levelled and 1 levelled interchanges on the route were designed.



## **Preliminary Design of Tunnel-Road Project Between Keçiören-Anadolu Boulevard and Anadolu-Mevlana Boulevard**

**Employer:** Greater Municipality of Ankara, Department of Enterprises and Partnerships

**Approval Authority:** Greater Municipality of Ankara, Department of Enterprises and Partnerships

With in the scope of Preliminary Design of Tunnel-Road Project of section between Keçiören-Anadolu Boulevard and Anadolu-Mevlana Boulevard, preliminary design of alignment alternatives of 2x3 divided highway and levelled interchanges at 5 locations were completed.



## **Van Peripheral Highway Erciş and Edremit Connections Levelled Interchange Etude Project Engineering Services**

**Employer:** General Directorate of Highways,11th Regional Directorate

**Approval Authority:** General Directorate of Highways,11th Regional Directorate,

With in the scope of the project Erciş and Edremit levelled interchanges, final design and bill of quantities, drainage project services were completed.



## **Şırnak-Pervari Military Road Etude Project Engineering Services**

**Employer:** Sar-Stad Joint Venture

**Approval Authority:** Şırnak Special Provincial Administration, General Directorate of Highways, 11th Regional Directorate,

With in the scope of the Project, horizontal and vertical alignment design of the 80 kilometers of highway, hydraulic-hydraological design reports, design of the interchanges, final design drawings, preperation of the bill of quantities, were completed.



## **Within the scope of, Road infrastructure, Asphalt Concrete Class Pavement and Engineering Structures within the boundaries of the adjacent area of Ankara Province, mapping, road and bridge design Services**

**Employer:** Söğüt Construction Co.

**Approval Authority:** Greater Municipality of Ankara,  
Department of Enterprises and Partnerships

With in the scope of the Project, including a total of 252.4 kilometers of highway's mapping services , horizontal and vertical alignment design, generation of the cross sections , volume calculations have been completed, which is 56.4 kilometres at Temelli, 136.5 kilometers at Kusunlar, 1.7 kilometers at Gölbaşı, 9.5 kilometers at Turgut Özal Boulevard, 1.3 kilometers at Saray, 6.5 kilometers at Mamak, 8.3 kilometers at Koparan, 22.2 kilometers at Nenek, 8 kilometers at Göksu, 2 kilometers at Temelli Golfkent, With in the scope of the project, underpasses, culverts and bridges at various locations were designed.

## **Hacıhamza-Osmancık Divided Highway Etude Project Engineering Services**

**Employer:** Onur Construction Co.

**Approval Authority:** General Directorate of Highways,7th Regional Directorate,  
With in the scope of Hacıhamza-Osmancık construction work , Beygircioğlu variant which is between Km:198+400 – Km:200+400 and Hacıhamza city pass which is between Km:207+100- Km:210+800 projects have been completed. With in the scope of project, horizontal-vertical alignment design, hydraulic-hydraulogical reports, design of the interchanges, soil investigation studies, final design and preperation of the volume and bill of quantity reports, drainage project and 2 bridge projects , were completed.



## **Oyalı Seperation - Cizre Highway (2nd Section) Project End Levelled Interchange Etude Project Engineering Services**

**Employer:** Nurşah Construction Co.

**Approval Authority:** General Directorate of Highways,9th Regional Directorate,

With in the scope of the project a levelled interchange including drainage traffic marking projects at intersection of Cizre-Silopi-Şırnak was designed considering existing and completed constructions.



## **Torbali-Kemalpasa Kemalpasa Alsancak Port and Rail Link Project Engineering Services for Business**

**Employer:** Eser-Altyapı Partnership

**Approval Authority:** General Directorate of Infrastructure Investments

Under the project Torbali-Kemalpasa Logistics Centers of 40 kilometers and Kemalpasa Logistics Centers and Alsancak Port Connections between the 27-kilometer-long double track railway route mapping, horizontal and vertical lines, hydraulic and hydrological survey report preparation, route the final preparation of projects, drainage projects, station projects, preparation of the project of electrification services were performed.



## **Osmaniye Organized Industrial Zone Motorway Connection Overpass Bridge Etude Project Engineering Services**

**Employer:** Osmaniye Organized Industrial Center

**Approval Authority:** General Directorate of Motorways, 5th Regional Directorate

With in the scope of the project, bridge design of a second bridge nearby 2x32 meters existing bridge at Osmaniye Organized Industrial Zone location over Toprakkale-İskenderun Motorway Toprakkale connection were completed.



## **Gülnar-Mut Highway Etude Project Engineering Services**

**Employer:** General Directorate of Highways

**Approval Authority:** General Directorate of Highways,5th Regional Directorate

With in the scope of 38 kilometres of rural highway project including mapping services, horizontal and vertical alignment design, hydraulic-hydraulogical etude report ,design soil investigation studies, final design drawings, generation of the bill of quantities report, structural design of 3 bridges, drainage project and , traffic marking projects were prepared.



## **Tekirdağ-Malkara Divided Highway Construction of Hot Mix Coating Etude Project Engineering Services**

**Employer:** Mapa Construction and Industrial Co.

**Approval Authority:** General Directorate of Highways,1st Regional Directorate

With in the scope of 35 kilometers of divided highway, horizontal and vertical alignment design, design of interchanges, final design drawings, report, structural design bridges, drainage project were prepared.



## **(Kayseri-Kırşehir)Seperation -Boğazlıyan Highway Etude Project Engineering Services**

**Employer:** General Directorate of Highways

**Approval Authority:** General Directorate of Highways,6th Regional Directorate

With in the scope of 39 kilometres of divided highway project including mapping services, horizontal and vertical alignment design, hydraulic-hydraulogical etude report ,design of 22 non-levelled and 1 levelled interchanges, soil investigation studies, final design drawings, generation of the bill of quantities report, structural design of a bridge, drainage project and , traffic marking projects were prepared.



## **(Adilcevaz-Erciş)Seperation -Karahasan (Adaksu) Rural Highway Etude Project Engineering Services**

**Employer:** General Directorate of Highways,11th Regional Directorate

**Approval Authority:** General Directorate of Highways,11th Regional Directorate

With in the scope of the 5 kilometres of a divided highway project, horizontal-vertical alignment design, hydraulic-hydraulogical etude report, design of 3 non-levelled interchanges, were completed.

## **(Samsun-Havza)Seperation - Ladik-Taşova Highway Etude Project Engineering Services**

**Employer:** Beğen Construction Inc.

**Approval Authority:** General Directorate of Highways,7th Regional Directorate

With in the scope of (Samsun-Havza)Seperation-Ladik-Taşova Highway (Km:12+800 – 56+661.30) construction works, horizontal and vertical alignment design, hydraulic-hydraulogical etude report, design of 4 non-levelled interchanges, soil investigation studies, final design drawings, generation of the bill of quantities report and also drainage projects were prepared.



## **Başkale-Yeniköprü State Highway (Km: 11 +200-16 +200)**

**Employer:** General Directorate of Highways Highways 11th Regional Directorate

**Approval Authority:** General Directorate of Highways Highways 11th Regional Directorate

With in the scope at the project 5 km Başkale-Yeniköprü State divided highway (Km: 11 +200-16 +200) was designed including horizontal and vertical alignment of the route and power account analyzing of the alignment were completed.

## **Kütahya-Usak (Çavdarhisar-Monument) Road Survey Project Engineering Services Business**

**Employer:** Su Yapı-Sar Partnership

**Approval Authority:** Directorate General of Highways 14th Regional Directorate

Under the project 49 kilometer route of the horizontal-vertical line design, the hydraulic-hydrological survey report preparation, the intersection of the projects, ground survey engineering services, conducting of final projects and schedules, drainage project preparation and bridge project preparation services were performed.



## **Mustafayavuz-Karkamış-Akçakale of Railway Surveying Project Engineering Services**

**Employer:** Aksa Consultancy Co.

**Approval Authority:** Turkish Republic State Railways Adana Directorate, Railways General Directorate.

With in the scope of project, having length of 186 kilometers new alignment between Mustafayavuz and Akçakale stations was designed. At the first stage, 1/25000 scale alternative alignments was studied, after the authority approved the final route, the 1/2000 scaled horizontal-vertical studies, Hydraulic studies, the design of 31 underpasses, the design of 8 bridges and 1 composite bridge and 365 hydraulic culverts static projects were completed.



## **Erciş-Adilcevaz Highway Etude Project Engineering Services**

**Employer:** General Directorate of Highways,11th Regional Directorate

**Approval Authority:** General Directorate of Highways,11th Regional Directorate

With in the scope of the 64 kilometres of a divided highway project, horizontal-vertical alignment design, hydraulic-hydraulogical etude report, design of 25 non-levelled interchanges, preperation of the final design drawings , preperation of the volumes and bill of quantities report, preperation of the drainage projects, were completed.



## **Erciş-Patnos Highway between Km:0+000 - 44+000 Etude Project Engineering Services for concrete grade coating construction**

**Employer:** General Directorate of Highways,11th Regional Directorate

**Approval Authority:** General Directorate of Highways,11th Regional Directorate

With in the scope of the 44 kilometres of a divided highway project, horizontal-vertical alignment design, hydraulic-hydraulogical etude report, design of interchanges, preperation of the final design drawings , preperation of the volumes and bill of quantities report, preperation of the drainage projects, were completed.

## **Niğde Municipality Ata Industrial Estate Underpass Engineering Projects**

**Employer:** Niğde Municipality

**Approval Authority:** Niğde Municipality

With in the scope of the project 475 meters of a connection road and an underpass were designed including retaining walls and structural design of whole earth structures.



## **Osmaniye Organized Industrial Zone Motorway Connection Overpass Bridge-2 Etude Project Engineering Services**

**Employer:** Osmaniye Organized Industrial Zone

**Approval Authority:** General Directorate of Highways,5th Regional Directorate

With in the scope of the project 2878 meters of a connection road and preliminary and final desiign of 2 overpass bridges having length of 70.60 metre and width of 13.00 meter were designed including bridge geotechnical reports and length of 1560 meter retainig wall projects.



## **Akhisar Peripheral Highway İstanbul Levelled Interchange Km:0+742.490 Soil Investigation and Design Project**

**Employer:** General Directorate of Highways, 2nd Regional Directorate

**Approval Authority:** General Directorate of Highways and  
General Directorate of Highways, 2nd Regional Directorate

With in the scope of the project soil investigations at the interchange region, the structural design of 2 interchange bridges (130 meter length and 13.50 meterwidth) including bridge geotechnical reports were completed.

## **Boyabat Saraydüzü Highway Etude Project Engineering Services, Design of a Cut and Cover Structure Eathworks leveling between Km: 61 + 000 - KM: 63 + 200, structures and superstructure works within the scope of Yesilyurt Cut-and-Cover Structure**

**Employer:** Aydın İnşaat

**Approval Authority:** General Directorate of Highways and General Directorate of  
Highways, 7th Regional Directorate

With in the scope of the project a cut and coverstructure design was completed (140meter length) which has a landslide potential risk for long term.





## **Antalya-Dereboğazı-Isparta Highway (Between Km:24+250-Km:25+750) (Kozak-1 ve Kozak-2 Tunnels Rehabilitation Design Projects and Reports Soil) Research Engineering Services**

**Employer:** General Directorate of Highways, 13th Regional Directorate

**Approval Authority:** General Directorate of Highways and General Directorate of Highways, 13th Regional Directorate

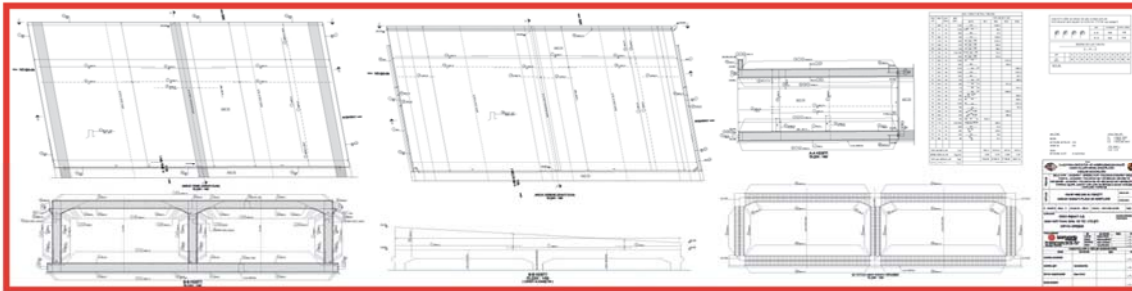
With in the scope of the Project rehabilitaiton design report and drawings were completed for Kozak-1 (L=227.00 meter) Tunneland Kozak-2 (L=158.00 meter) Tunnel

## **Bala Ayr.-Aksaray-Ereğli Seperation Highway Aksaray Crossing, Earthworks, Structures and Bituminous Hot Mix Coating Work at Konya-Aksaray Highway Km:116+000-Km:135+000 and Nevşehir-Aksaray Highway Km:79+100-Km:90+347**

**Employer:** ÖZKA İnşaat A.Ş. ve AKM Yapı Taah. San. ve Tic. Ltd. Şti. Joint Ventura

**Approval Authority:** General Directorate of Highways, 3rd Regional Directorate

With in the scope of the Project 2x(12x5.5) underpass structure was designed.



## **Malatya-Darende Town Center Tohma River 2nd Stage Flood Protection Project 2 Arch Bridge Final Projects**

**Employer:** Necdet Şelli İnşaat Ltd. Şti.

**Approval Authority:** State Waterworks 9th Regional Directorate

With in the scope of the project, static-reinforced concrete calculations, final design projects and quantity-exploration studies of reinforced concrete arch bridges on the flood channel were prepared.



## **Ayrancı-Erdemli Highway Etude Project Engineering Services**

**Employer:** General Directorate of Highways, 3rd Regional Directorate

**Approval Authority:** General Directorate of Highways and General Directorate of Highways, 3rd Regional Directorate

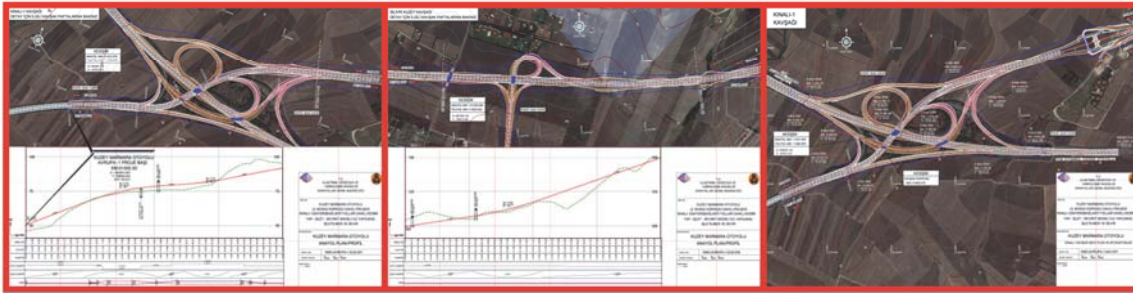
With in the scope of the Project, the total length of 54 kilometer alignment's surveying and soil investigation studies and reports were provided by the employer, horizontal and vertical design, hydraulic-hydrologic studies-reports, 3 interchange design, generation of plan-profile drawings , generaion of cross sections , mass-haul calculation and preperation of quantity reports were completed.

## **Kuzey Marmara Motorway Project (Including 3rd Bosphorus Bridge) Kinalı-Odayeri Section (Including Connection Roads)**

**Employer:** Fernas İnşaat A.Ş.

**Approval Authority:** General Directorate of Highways

With in the scope of the project, designs of 104 km highway main route line, 158 km connection roads and branches and 27 different types of intersections were made using 1/25000 scale map bases. Proposal projects of 28 viaducts of various lengths, 3 special bridges designed with a tensioned inclined suspension carrier system and 1 double tube (4 lane)tunnel; route preliminary geological-geotechnical evaluation reports and 1/25000 scale geological plan-profiles were prepared. Within the scope of the project, detailed quantities of the entire route (262 Km), 28 viaducts, 3suspension bridges, 93 bridges, 26 underpasses, 108 culverts, 1 tunnel and allwork items to be carried out within the scope of the highway were prepared.



## **Sakarya Doğançay Railway OverpassProject**

**Employer:** Bayburt Goup

**Approval Authority:** State Railways

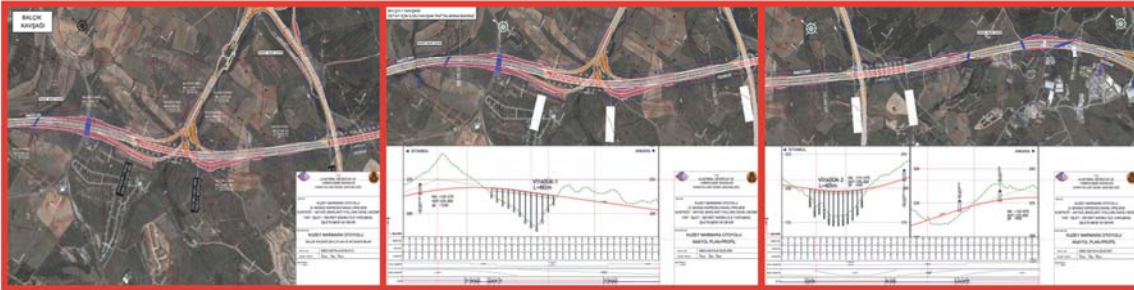
With in the scope of the project, a Highway Overpass that will allow passage over the existing railway line and approximately 550 meters of piled reinforced concrete retaining walls were designed considering the negative ground conditions in both directions of the bridge. Geotechnical reports on Bridges and Walls were prepared within the scopeof this service.

## **Kuzey Marmara Motorway Project (Including 3rd Bosphorus Bridge) Kurtköy-Akyazı Section (Including Connection Roads)**

**Employer:** Fernas İnşaat A.Ş.

**Approval Authority:** General Directorate of Highways

With in the scope of the project, 126km highway main route line, 165 km connection road and branches and 32 different types of intersections were designed using 1/25000 scale map bases. Proposal projects of 19 viaducts of various lengths, 1 special bridge designed with post-tensioning carrier system and 13 double-tube (4-lane) tunnels in various lengths; route preliminary geological-geotechnical evaluation reports and 1/25000 scale geological plan-profiles were prepared. Within the scope of the project, detailed quantities of the entire route (291 Km), 19 viaducts, 1 special bridge, 94 bridges, 57 underpasses, 178 culverts, 13 tunnels and all work items to be carried out within the scope of the highway were prepared.



## **Pınarbaşı-Sarız Separation Highway Levelled Interchanges Etude Project Engineering Services**

**Employer:** General Directorate of Highways, 6th Regional Directorate

**Approval Authority:** General Directorate of Highways and General Directorate of Highways, 6th Regional Directorate

With in the scope of the project, the mapping of Interchange areas, preparation of the draft plans of the levelled Interchanges and the preparation of the final design projects of the levelled intersection were carried out in 3 locations.

## **Van-Özalp Highway Etude Project Engineering Services for concrete grade coating construction between (Km:13+000 -62+000)**

**Employer:** General Directorate of Highways,11th Regional Directorate

**Approval Authority:** General Directorate of Highways and General Directorate of Highways,11th Regional Directorate

With in the scope of the project, mapping of 49 kilometers divided road route, horizontal-vertical alignment design, preparation of hydraulic-hydrological survey report, design of intersections, preparation of final projects and quantities, preparation of drainage projects were carried out.

## **(Van-Erciş) Seperation -Muradiye-Çaldıran Highway Etude Project Engineering Services for concrete grade coating construction between (Km:5+000 -35+000)**

**Employer:** General Directorate of Highways, 11th Regional Directorate

**Approval Authority:** General Directorate of Highways and General Directorate of Highways, 11th Regional Directorate

With in the scope of the project, mapping of 30 kilometers divided road route, horizontal-vertical alignment design, preparation of hydraulic-hydrological survey report, design of intersections, preparation of final projects and quantities, preparation of drainage project were carried out.

## **Elmalı-Seki Highway Etude Project Engineering Services**

**Employer:** General Directorate of Highways,13th Regional Directorate

**Approval Authority:** General Directorate of Highways and General Directorate of Highways, 13th Regional Directorate

With in the scope of the project, the 20-kilometer route mapped, horizontal and vertical alignment design, hydraulic andhydrological survey report, 3 bridges design, 3 level crossings design, planand profile sheets, drainage projects, traffic marking project, cross sections, mass-haul, cubage, bridge structural calculations and services for the preparation of quantities were carried out.

## **Mengen-Devrek Highway Etude Project Engineering Services Reinforced Concrete Retaining Walls Projects**

**Employer:** Bayburt Group

**Approval Authority:** General Directorate of Highways, 15th Regional Directorate

With in the scope of the project, final design and application projects of approximately 4600 meters long reinforced concrete retaining walls were prepared in the sections of the route stipulated by the administration.



## **Çatalzeytin-Helaldı Highway Highway Etude Project Engineering Services**

**Employer:** Akyapı Construction

**Approval Authority:** General Directorate of Highways and General Directorate of Highways, 7th Regional Directorate

With in the scope of the project, the 20-kilometer route mapped, Horizontal and Vertical alignment design, Hydraulic and Hydrological Survey Report, 3 bridges projecting, reinforced concrete retainingwall projects, level crossing design, drainage project, plan and profilesheets, cross sections, cubage, bridge calculations and services for the preparation of quantities were carried out.

## **Kayseri North Peripheral Highway Nuh Naci Yazgan Levelled Interchange Design of Connection Roads**

**Employer:** Kayseri Metropolitan Municipality

**Approval Authority:** General Directorate of Highways, 6th Regional Directorate

Horizontal and vertical alignment studies, application plans, elevation plans and drainage projects were carried out within the scope of Designing the Nuh Naci Yazgan Bridge Intersection Connection Roads on Kayseri Northern Ring Road.

## **Armutlu-Gemlik Devrek Highway Etude Project Engineering Services**

**Employer:** Sar Project Company

**Approval Authority:** General Directorate of Highways, 14th Regional Directorate

On the project route of the 27 km long provincial road, the design of 3 level crossings, the preparation of the drainage project, plan and profile sheets, cross sections, mass-haul calculation, cubage, bridge calculations and the design of 3 bridges and 3 viaducts were carried out.

## **Adana-Kozan Highway Etude Project Engineering Services Between (Km:0+000 - Km:67+000)**

**Employer:** Emirođlu Construction

**Approval Authority:** General Directorate of Highways and General Directorate of Highways, 5th Regional Directorate

Horizontal and Vertical alignment design, hydraulic and hydrological report of the 67 kilometers long divided road route, design of 35 linter changes, drainage project, plan and profile sheets, cross sections, mass-haul calculation, cubage, bridge calculations and quantity reports are provided.

## **With in the Boundaries of Kayseri Province Adjacent Area Project of 5 Levelled Intersections**

**Employer:** General Directorate of Highways, 6th Regional Directorate

**Approval Authority:** General Directorate of Highways, 6th Regional Directorate

Preparation of the preliminary and final design projects of Bor, Bünyan, Kaman, Hacibektaş, Pastırmacı levelled Intersections within the Boundaries of the Adjacent Area of Kayseri were completed.

## **Hacıhamza-Osmancık Highway Etude Project Engineering Services of Beygircioğlu Levelled Interchange**

**Employer:** General Directorate of Highways, 7th Regional Directorate

**Approval Authority:** General Directorate of Highways and General Directorate of Highways, 7th Regional Directorate

On Hacıhamza-Osmancık State Road, Beygircioğlu levelled interchange studies, preparation of preliminary design and final design projects, soil investigation research engineering services, bridge final structural design projects are carried out were completed.

## **Ankara-Çankırı State Highway Etude Project Engineering Services of 7 Levelled Interchanges**

**Employer:** Bayburt Group

**Approval Authority:** General Directorate of Highways and General Directorate of Highways, 4th Regional Directorate

On the Ankara-Çankırı State Road, 7 levelled interchanges preliminary design projects and final design projects are prepared, soil investigation research engineering services, bridge structural design projects were prepared.



## **Dalaman Airport Design of International Terminal Viaduct, Connection Roads and Intersections**

**Employer:** YDA Group

**Approval Authority:** State Airports Authority

With in the scope of the project, design of viaduct (800 meter length, 3 different width) design of connection roads and intersections were prepared.



## **Ankara-Kırıkkale State Highway Etude Project Engineering Services of 7 Levelled Interchanges**

**Employer:** Bayburt Group

**Approval Authority:** General Directorate of Highways and  
General Directorate of Highways, 4th Regional Directorate

On the Ankara-Kırıkkale State Highway, the preparation of the intersection preliminary design projects and final design projects of the Ortaköy, Gökçeyurt, Sage, Kalecik, Sanayi, Roketsan,Çaykur levelled interchanges, soil investigation research engineering Services and bridge structural design projects were completed.



## **Within the Boundaries of Ankara Adjacent Area Levelled Intersection Etude Project Engineering Services**

**Employer:** Söğüt Construction

**Approval Authority:** Ankara Metropolitan Municipality

Design of 5 levelled interchange projects and structural design of bridge projects were completed at different locations within the borders of Ankara Metropolitan.

## **Kızılkaya Separation-Antalya State Highway Between Kepezüstü-Kızılkaya Separation Km:12+000 - 60+332 Section Çubukbeli Tunnel (Km 42+560 - Km:44+660) Project**

**Employer:** Bayburt Group

**Approval Authority:** General Directorate of Highways, 13th Regional Directorate

With in the scope of the project, the final design of the Tunnel, which is a 2100 meter long double tube, were prepared. The Left Tube is designed as 2 lanes and the Right tube as 3 lanes.

## **Antalya -Kemer - Kumluca State Highway, Sariören Tunnel (Between Km: 50+630 - 51+300) Etude Project Engineering Services**

**Employer:** General Directorate of Highways,13th Regional Directorate

**Approval Authority:** General Directorate of Highways, 13th Regional Directorate

670 meters long double-tube tunnel project service was carried out. Within the scope of the project, mapping, soil research engineering services, electromechanical services, tunnel preliminary and final design project services were provided.

## **Fethiye -Dalaman - 2nd Region Border State Highway Yanıklar Tunnel (Between Km: 31+200 - 33+000) Etude Project Engineering Services**

**Employer:** General Directorate of Highways, 13th Regional Directorate

**Approval Authority:** General Directorate of Highways, 13th Regional Directorate

A double tube tunnel project of 1800 meters in length was carried out. Within the scope of the project, mapping, soil research engineering services, electromechanical services, tunnel preliminary and final design project services were provided.

## **Asphalt Road Between Akpınar District Border - Küçükabdiuşağı and Akçakent District Boundary (approximately 24km) Asphalt Road Between Kaman District Border - Ömerhacılı Village Border (approximately 11 km) Survey and Project Engineering Consultancy Services**

**Employer:** Kırşehir Special Administration Plan,  
Project Investment and Construction Directorate

**Approval Authority:** Kırşehir Special Administration Plan,  
Project Investment and Construction Directorate

Map acquisition, soil investigation engineering services and road and inter change design projects of two separate roads of 24 km long and 11 km long were completed.

## **Yağlıdere (Şebinkarahisar-Alucra) Separation 2nd Section Highway Etude Project Engineering Services**

**Employer:** General Directorate of Highways

**Approval Authority:** General Directorate of Highways and General Directorate of Highways,10th Regional Directorate

With in the scope of the project, which has an approximate length of 41 kilometers, mapping, soil investigation engineering services, 4 bridge projects, 10 tunnel projects, interchange projects, drainage and traffic projects were carried out.





# COMPLETED STRUCTURE PROJECTS

**COMPLETED STRUCTURE PROJECTS**

NO	NAME OF THE PROJECT	APPROVAL AUTHORITY	EMPLOYER	STRUCTURE TYPE	DETAILS OF THE STRUCTURE
1	Sinan-Batman Railway Etude Project Engineering Services Km:0+000 – Km:6+528.659	DLH Infrastructure Investments General Directorate, Railways Etude Project Department	AI Architecture Engineering Inc	Railway Bridge	L=44 n x 32.50 meter = 1430 meter length, W=7.90 meter single line rapid railway bridge
2	Sinan-Batman Railway Etude Project Engineering Services Km:0+000 – Km:6+528.659	DLH Infrastructure Investments General Directorate, Railways Etude Project Department	AI Architecture Engineering Inc	Highway Underpass	10.0 x 6.0 metre highway underpass
3	Toprakakale-Iskenderun Motorway Toprakakale Connection KM:5+240 Overpass Bridge Final Design Project	General Directorate of Highways, General Directorate of Highways 5th Regional Directorate	Osmaniye Organized Industry Directorate	Highway Overpass Bridge	L = 2 x 32.0 metre = 64.0 meter W=11.50 meter overpass bridge
4	15 Region Border Osmaniye-Merzifon State Highway Etude Project Engineering Services	General Directorate of Highways, General Directorate of Highways 7th Regional Directorate	Onur Group	Asarçayı Bridge	L = 48.00 meter, 3 spanned, W=11.35 meter highway bridge
5	15 Region Border Osmaniye-Merzifon State Highway Etude Project Engineering Services	General Directorate of Highways, General Directorate of Highways 7th Regional Directorate	Onur Group	Beysircioğlu Bridge	L = 44.70 meter, 2 spanned, W= 2x12.75 meter 2 highway bridge
6	Kayseri-Karşehir Sep. - Bogazlıyan State Highway Etude Project Engineering Services	General Directorate of Highways, General Directorate of Highways 6th Regional Directorate	General Directorate of Highways, General Directorate of Highways 6th Regional Directorate	Himmencede İnar-1 Interchange Overpass Bridge	L=2 x 23.1 + 3 x 27.7 = 129.30 meter, W=2x13.50 meter 2 highway bridges
7	Himmencede DDY - 2 Overpass Bridge Final Design Project	General Directorate of Highways, General Directorate of Highways 6th Regional Directorate	General Directorate of Highways, General Directorate of Highways 6th Regional Directorate	Himmencede DDY - 2 Overpass Bridges	L = 30 meter, single spanned and geometry of variable paved typed 2 highway bridges
8	Kıtahya-Uşak (Çavdarhisar-Abide Section) Highway Etude Project Engineering Services	General Directorate of Highways, General Directorate of Highways 14th Regional Directorate	Su Yapı & SAR Project Joint Venture	Efendi (Devren River) Bridges	L = 30 meter, single spanned W=2x13.00 meter 2 highway bridges
9	Kıtahya-Uşak (Çavdarhisar-Abide Section) Highway Etude Project Engineering Services	General Directorate of Highways, General Directorate of Highways 14th Regional Directorate	Su Yapı & SAR Project Joint Venture	Efendi Yunuslar-2 (Eskiköy River) Bridge	L = 13 meter, single spanned W=2x13.50 metre 2 highway bridges
10	Kıtahya-Uşak (Çavdarhisar-Abide Section) Highway Etude Project Engineering Services	General Directorate of Highways, General Directorate of Highways 14th Regional Directorate	Su Yapı & SAR Project Joint Venture	Efendi Yunuslar-1 (Gök River) Bridge	L = 20 meter, single spanned W=13.50 meter highway bridge
11	Kıtahya-Uşak (Çavdarhisar-Abide Section) Highway Etude Project Engineering Services	General Directorate of Highways, General Directorate of Highways 14th Regional Directorate	Su Yapı & SAR Project Joint Venture	Derbent-2 (Derbent River) Bridge	L = 26.5 meter, single spanned W=13.50 meter highway bridge

### COMPLETED STRUCTURE PROJECTS

NO	NAME OF THE PROJECT	APPROVAL AUTHORITY	EMPLOYER	STRUCTURE TYPE	DETAILS OF THE STRUCTURE
12	Consultancy Service Procurement for Preparation of Final Design Projects for the Purpose of Making Double Lines Between Mustafayavuz-Akçakale Stations	TCDD General Directorate, TCDD General Directorate 6th Regional Directorate	Aksa Project	Kerzın River Bridge	L = 129.35 meter, 4 spanned W=12.00 meter railway bridge
13	Consultancy Service Procurement for Preparation of Final Design Projects for the Purpose of Making Double Lines Between Mustafayavuz-Akçakale Stations	TCDD General Directorate, TCDD Directorate	Aksa Project	Değirmenarkı River Bridge	L = 30.00 meter, single spanned W=12.00 meter railway bridge
14	Consultancy Service Procurement for Preparation of Final Design Projects for the Purpose of Making Double Lines Between Mustafayavuz-Akçakale Stations	TCDD General Directorate, TCDD General Directorate 6th Regional Directorate	Aksa Project	Hayırlı River Bridge	L = 20.00 meter, single spanned W=12.00 meter railway bridge
15	Consultancy Service Procurement for Preparation of Final Design Projects for the Purpose of Making Double Lines Between Mustafayavuz-Akçakale Stations	TCDD General Directorate, TCDD General Directorate 6th Regional Directorate	Aksa Project	Nizip River Bridge	L = 295.00 meter, 9 spanned W=12.00 meter railway bridge
16	Consultancy Service Procurement for Preparation of Final Design Projects for the Purpose of Making Double Lines Between Mustafayavuz-Akçakale Stations	TCDD General Directorate, TCDD General Directorate 6th Regional Directorate	Aksa Project	Fırat River Bridge	L = 1763.10 meter, 54 spanned W=12.00 meter railway bridge
17	Consultancy Service Procurement for Preparation of Final Design Projects for the Purpose of Making Double Lines Between Mustafayavuz-Akçakale Stations	TCDD General Directorate, TCDD General Directorate 6th Regional Directorate	Aksa Project	Aşağıpınar River Bridge	L = 291.60 meter, 9 spanned W=12.00 railway bridge
18	Consultancy Service Procurement for Preparation of Final Design Projects for the Purpose of Making Double Lines Between Mustafayavuz-Akçakale Stations	TCDD General Directorate, TCDD General Directorate 6th Regional Directorate	Aksa Project	25 Highway Overpass Bridges	Final structural design projects of 25 highway bridges
19	Adana Metropolitan Municipality Yeni Metal Industry Site Sakirpasa St. TD8 Evacuation Channel Bridge Expansion	Adana Metropolitan Municipality, State Waterworks 6th Regional Directorate	Prekon Const. Engineering Inc.	TD8 Evacuation Channel Bridge	L = 22 meter, single spanned W=15.70 meter 2 highway bridges
20	Rehabilitation of Adana-Yüreğir YS2 ve YD2 Channels	State Waterworks 6th Regional Directorate	Prekon Const. Engineering Inc.	YD2 Channel Bridge and P1-D1 Channel Culvert Project	L = 46.2 meter, 3 spanned W= 7.50 meter highway bridge + 4.0 x 5.0 culvert project

### COMPLETED STRUCTURE PROJECTS

NO	NAME OF THE PROJECT	APPROVAL AUTHORITY	EMPLOYER	STRUCTURE TYPE	DETAILS OF THE STRUCTURE
21	Toprakale-İskenderun Motorway Toprakale Connection KM:6+625 Overpass Bridges and Retaining Walls Final Design Project	General Directorate of Highways, General Directorate of Highways 5th Regional Directorate	Osmunye Organized Industry Directorate	Highway Overpass Bridges and Retaining Walls	L=2x35.00 meter long 2 highway overpasses, 1560 meter of Retaining Walls and 2 Culvert Final Design Projects
22	Malatya City - Darende Town Tohma River Flood Protection Project	State Waterworks 9th Regional Directorate	Nejdet Şelli Construction Inc.	2 Highway Channel Crossing Bridges	L=17.00 meter single spanned, 2 road bridges with architectural features with arch carrier system
23	(Antalya-Manavgat) Sep. Serik-Belek Tourism Road KM:2+226 (8.00m x 4.00m) and KM:4+398 (7.00m x 4.00m) Box Culvert Structural Design Project	General Directorate of Highways, General Directorate of Highways 13th Regional Directorate	General Directorate of Highways, General Directorate of Highways 13th Regional Directorate	2 Box Culvert	2 box culvert final design project
24	Gilhar - Mut State Highway Etude Project Engineering Services	General Directorate of Highways, General Directorate of Highways 5th Regional Directorate	General Directorate of Highways, General Directorate of Highways 5th Regional Directorate	Avşar (Avşar River) Bridge	L=35.00 meter, 4 spanned, total L=142.00 W=13.0 meter highway bridge
25	Gilhar - Mut State Highway Etude Project Engineering Services	General Directorate of Highways, General Directorate of Highways 5th Regional Directorate	General Directorate of Highways, General Directorate of Highways 5th Regional Directorate	Geleniç (Geleniç River) Bridge	L=35.00 meter, 8 spanned total L=295.00 meter W=14.0 meter highway bridge
26	Gilhar - Mut State Highway Etude Project Engineering Services	General Directorate of Highways, General Directorate of Highways 5th Regional Directorate	General Directorate of Highways, General Directorate of Highways 5th Regional Directorate	Göksu (Göksu River) Bridge	L=35.00 meter, 12 spanned total L=427.00 meter W=14.0 meter highway bridge
27	Boyabat-Saraydüzü Highway KM:61+000-KM:63+200 Soil Leveling, Art Structures and Superstructure Works Supply Work	General Directorate of Highways, General Directorate of Highways 7th Regional Directorate	Aydın Construction	Yeşilyurt Cut and Cover	Dimensions of 6.00 x 12.00 meter and length of 12 x 12.10 meter cut and cover final design
28	Niğde Municipality Ala Industry Site Underpass Project	Niğde Municipality, General Directorate of Highways 6th Regional Directorate	Niğde Municipality	Ala Industry Underpass	10.00x5.50 meter dimensioned underpass final design project
29	Bala Sep.-Aksaray-Ereğli Sep.Highway Aksaray Crossing, Nevşehir-Aksaray Highway KM:79+100-KM:90+347 Section Earthworks, Structures and Bituminous Hot Mix Coating Work	General Directorate of Highways, General Directorate of Highways 3th Regional Directorate	ÖZKA Construction and AKM Yapı Taah.San. Ve Tic. Ltd.Şti. Joint Ventura	SGK Underpass	2x(12.00x5.50) meter dimensioned underpass final design project
30	TCDD 2nd Railway Construction Group Directorate Sakarya Doğançay Overpass Final Design Project	TCDD 2. Railway Construction Group Directorate	Bayburt Group	Doğançay Overpass	Single spanned highway bridge and 600 meter retaining wall final design projects



**COMPLETED STRUCTURE PROJECTS**

NO	NAME OF THE PROJECT	APPROVAL AUTHORITY	EMPLOYER	STRUCTURE TYPE	DETAILS OF THE STRUCTURE
31	North Marmara Motorway (Including 3rd Bosphorus Bridge) Project, Kartköy-Akyazı (Including Connection Roads) Section	General Directorate of Highways	Fernas Construction Inc.	Preliminary Design of Various Structures	preliminary design of 1 cantilever bridge, 19 viaducts, 13 double tubed tunnels.
32	North Marmara Motorway (Including 3rd Bosphorus Bridge) Project, Kınalı-Odayeri (Including Connection Roads) Section	General Directorate of Highways	Fernas Construction Inc.	Preliminary Design of Various Structures	preliminary design of 3 stretched inclined suspension bridges, 28 viaducts, 1 double tubed tunnel.
32	Akhisar Peripheral Highway İstanbul Levelled Interchange KM:0+742,490 Soil Investigation and Design Project	General Directorate of Highways, 2nd Regional Directorate	General Directorate of Highways, 2nd Regional Directorate	Akhisar Interchange Bridge	L = 130,00 meter; 4 spanned W= 13.50 meter 2 interchange bridges
33	Antalya-Dereboğazi-Isparta Highway (KM:24+250-KM:25+750 Arası) (Kozak-1 and Kozak-2 Tunnels Rehabilitation Projects	General Directorate of Highways, 13th Regional Directorate	General Directorate of Highways, 13th Regional Directorate	Kozak-1 Tunnel Rehabilitation Project	L = 227,00 meter single tubed highway tunnel rehabilitation report
34	Antalya-Dereboğazi-Isparta Highway (KM:24+250-KM:25+750 Arası) (Kozak-1 and Kozak-2 Tunnels Rehabilitation Projects	General Directorate of Highways, 13th Regional Directorate	General Directorate of Highways, 13th Regional Directorate	Kozak-2 Tunnel Rehabilitation Project	L = 158,00 meter single tubed highway tunnel rehabilitation report
35	Kırşehir-Ankara State Highway Hamit Interchange Bridge Preliminary and Final Design Project	General Directorate of Highways, 6th Regional Directorate	General Directorate of Highways, 6th Regional Directorate	Hamit Interchange Bridge	L=32,00 meter single spanned highway bridge
36	Catalzeytin-Hehalat State HighwayDevlet Yolu Etude Project Engineering Services	General Directorate of Highways, 7th Regional Directorate	Akyapı Construction	Haçköy River Hydraulic Underpass	L = 140 meter 14.0 x 5.5 dimensioned hydraulic underpass
37	Catalzeytin-Hehalat State HighwayDevlet Yolu Etude Project Engineering Services	General Directorate of Highways, 7th Regional Directorate	Akyapı Construction	Türkeli River Bridge	L = 91,00 meter W=2 x 11.20 metre, 3 spanned 2 highway bridges
38	Kitahya - Simav - Derrici Sep Highway (Çavdarhisar - Abide Section) Km: 45+599,78 - 91+330 ve (Kula - Uşak) Ayr. - 14. Bl. Hd. - Abide Road Km: 0+000 - 33+436,63 Sections Design Project	General Directorate of Highways 14th Regional Directorate	Bayburt Group	Pile Retaining Structures	Pile retaining structures for Gediz Interchange and Yeniköy cemetery cut
39	Mugla-Kale Highway (KM 71+200 - 71+500) Landslide	General Directorate of Highways, 2nd Regional Directorate	Libra Lab. Eng. Cons. Co.	Preparation of Landslide Piles Reinforced Concrete Projects	Preparation of reinforced concrete projects of different lengths of landslide piles in the landslide area
40	(Çaycuma-Zonguldak) Sep. - Devrek 4th Region Border State Highway Etude Project Engineering Services	General Directorate of Highways, 15th Regional Directorate	Bayburt Group	6100 meter Retaining Walls and River Derivation Channels	Application projects of 6100 meters of retaining wall and derivation channels in different sizes

### COMPLETED STRUCTURE PROJECTS

NO	NAME OF THE PROJECT	APPROVAL AUTHORITY	EMPLOYER	STRUCTURE TYPE	DETAILS OF THE STRUCTURE
41	Devrek-Eregli Highway KM.2+085.9967 - KM.2+450.9508 Pile Retaining Structure and Slope Stability Geological-Geotechnical and Reinforced Concrete Studies	General Directorate of Highways 15th Regional Directorate	Bayburt Group	Pile Retaining Structure	Preparation of 300 meter long pile retainer structure application projects
42	(Gaycuma-Zonguldak) Sep. - Devrek 4th Region Border State Highway Etude Project Engineering Services (2nd Section)	General Directorate of Highways, General Directorate of Highways 15th Regional Directorate	Bayburt Group	Various lengths of Retaining Wall and Derivation Channels	Retaining wall and derivation channel application projects in various lengths and different sizes
43	Elmalh-Seki Highway Etude Project Engineering Services	General Directorate of Highways, General Directorate of Highways 13th Regional Directorate	General Directorate of Highways, General Directorate of Highways 13th Regional Directorate	Eskihisar Bridge	L = 24.00 meter W=13 meter, single spanned highway bridge
44	Elmalh-Seki Highway Etude Project Engineering Services	General Directorate of Highways, General Directorate of Highways 13th Regional Directorate	General Directorate of Highways, General Directorate of Highways 13th Regional Directorate	Degimendere Hydraulic Underpass	14.00 x 5.00 meter dimensioned hydraulic underpass
45	Elmalh-Seki Highway Etude Project Engineering Services	General Directorate of Highways, General Directorate of Highways 13th Regional Directorate	General Directorate of Highways, General Directorate of Highways 13th Regional Directorate	Düğü Bridge	L = 24.00 meter W=13 meter single spanned highway bridge
46	Catalzeytin-Helaldi State HighwayDevlet Yolu Etude Project Engineering Services	General Directorate of Highways, General Directorate of Highways 7th Regional Directorate	Akyapi Construction	Retaining Wall Projects	Preparation of retaining wall application projects in various lengths and sections
47	Preparation of Hurdacılar Industrial Site Road Overpass Proposal and Application Projects within the Borders of Ankara Province	Ankara Metropolitan Municipality	Söğüt Construction	2 Overpass Projects	W=12 meter 3 spanned overpass bridges
48	Armuthu-Gemlik Highway Etude Project Engineering Services	General Directorate of Highways, General Directorate of Highways 14th Regional Directorate	Su Yapı & SAR Project Joint Venture	Fistıklı Bridge	L = 23.00 meter W= 17.00 metre, single spanned highway bridge
49	Armuthu-Gemlik Highway Etude Project Engineering Services	General Directorate of Highways, General Directorate of Highways 14th Regional Directorate	Su Yapı & SAR Project Joint Venture	Kapaklı Bridge	L = 30.00 meter W=18.00 meter, single spanned highway bridge
50	Armuthu-Gemlik Highway Etude Project Engineering Services	General Directorate of Highways, General Directorate of Highways 14th Regional Directorate	Su Yapı & SAR Project Joint Venture	Büyük Kumla Bridge	L = 30.00 meter W= 17.00 metre, single spanned highway bridge
51	Armuthu-Gemlik Highway Etude Project Engineering Services	General Directorate of Highways, General Directorate of Highways 14th Regional Directorate	Su Yapı & SAR Project Joint Venture	V1 Viaduct	L = 222.00 meter W= 17.00 meter 6 spanned highway viaduct

**COMPLETED STRUCTURE PROJECTS**

NO	NAME OF THE PROJECT	APPROVAL AUTHORITY	EMPLOYER	STRUCTURE TYPE	DETAILS OF THE STRUCTURE
52	Armutlu-Gemlik Highway Etude Project Engineering Services	General Directorate of Highways, General Directorate of Highways 14h Regional Directorate	Su Yapı & SAR Project Joint Venture	V2 Viaduct	L = 124,27 meter W= 17,00 meter 3 spanned highway viaduct
53	Armutlu-Gemlik Highway Etude Project Engineering Services	General Directorate of Highways, General Directorate of Highways 14h Regional Directorate	Su Yapı & SAR Project Joint Venture	V3 Viaduct	L = 82,32 metre W= 18,10 meter 2 spanned highway viaduct
54	Yağlıdere (Sebinkarahisar-Alucra) Sep. 2nd Section Highway Etude Project Engineering Services	General Directorate of Highways, General Directorate of Highways 10th Regional Directorate	General Directorate of Highways, General Directorate of Highways 10th Regional Directorate	Bridge 1	L = 30,00 meter W=17,00, single spanned highway bridge
55	Yağlıdere (Sebinkarahisar-Alucra) Sep. 2nd Section Highway Etude Project Engineering Services	General Directorate of Highways, General Directorate of Highways 10th Regional Directorate	General Directorate of Highways, General Directorate of Highways 10th Regional Directorate	Bridge 2	L = 30,00 meter W=17,00, single spanned highway bridge
56	Yağlıdere (Sebinkarahisar-Alucra) Sep. 2nd Section Highway Etude Project Engineering Services	General Directorate of Highways, General Directorate of Highways 10th Regional Directorate	General Directorate of Highways, General Directorate of Highways 10th Regional Directorate	Bridge 3	L = 72,00 meter W=17,00, 3 spanned highway bridge
57	Yağlıdere (Sebinkarahisar-Alucra) Sep. 2nd Section Highway Etude Project Engineering Services	General Directorate of Highways, General Directorate of Highways 10th Regional Directorate	General Directorate of Highways, General Directorate of Highways 10th Regional Directorate	Bridge 4	L = 30,00 meter W=17,00, single spanned highway bridge
58	Yağlıdere (Sebinkarahisar-Alucra) Sep. 2nd Section Highway Etude Project Engineering Services	General Directorate of Highways, General Directorate of Highways 10th Regional Directorate	General Directorate of Highways, General Directorate of Highways 10th Regional Directorate	Bridge 5	L = 340,00 meter W=17,00, 12 spanned highway bridge
59	Yağlıdere (Sebinkarahisar-Alucra) Sep. 2nd Section Highway Etude Project Engineering Services	General Directorate of Highways, General Directorate of Highways 10th Regional Directorate	General Directorate of Highways, General Directorate of Highways 10th Regional Directorate	Bridge 6	L = 120,00 meter W=17,00, 4 spanned highway bridge
60	Yağlıdere (Sebinkarahisar-Alucra) Sep. 2nd Section Highway Etude Project Engineering Services	General Directorate of Highways, General Directorate of Highways 10th Regional Directorate	General Directorate of Highways, General Directorate of Highways 10th Regional Directorate	Bridge 7	L = 30,00 meter W=17,00, single spanned highway bridge
61	Yağlıdere (Sebinkarahisar-Alucra) Sep. 2nd Section Highway Etude Project Engineering Services	General Directorate of Highways, General Directorate of Highways 10th Regional Directorate	General Directorate of Highways, General Directorate of Highways 10th Regional Directorate	Tunnel 1	L = 410,00 meter single tube highway tunnel
62	Yağlıdere (Sebinkarahisar-Alucra) Sep. 2nd Section Highway Etude Project Engineering Services	General Directorate of Highways, General Directorate of Highways 10th Regional Directorate	General Directorate of Highways, General Directorate of Highways 10th Regional Directorate	Tunnel 2	L = 265,00 meter single tube highway tunnel

### COMPLETED STRUCTURE PROJECTS

NO	NAME OF THE PROJECT	APPROVAL AUTHORITY	EMPLOYER	STRUCTURE TYPE	DETAILS OF THE STRUCTURE
63	Yağlıdere (Sebinkarahisar-Aluera) Sep. 2nd Section Highway Etude Project Engineering Services	General Directorate of Highways, 10th Regional Directorate	General Directorate of Highways, 10th Regional Directorate	Tunnel 3	L = 260,00 meter single tube highway tunnel
64	Yağlıdere (Sebinkarahisar-Aluera) Sep. 2nd Section Highway Etude Project Engineering Services	General Directorate of Highways, 10th Regional Directorate	General Directorate of Highways, 10th Regional Directorate	Tunnel 4	L = 4280,00 meter double tube highway tunnel
65	Yağlıdere (Sebinkarahisar-Aluera) Sep. 2nd Section Highway Etude Project Engineering Services	General Directorate of Highways, 10th Regional Directorate	General Directorate of Highways, 10th Regional Directorate	Tunnel 6	L = 390,00 meter single tube highway tunnel
66	Yağlıdere (Sebinkarahisar-Aluera) Sep. 2nd Section Highway Etude Project Engineering Services	General Directorate of Highways, 10th Regional Directorate	General Directorate of Highways, 10th Regional Directorate	Tunnel 7	L = 320,00 meter single tube highway tunnel
67	Yağlıdere (Sebinkarahisar-Aluera) Sep. 2nd Section Highway Etude Project Engineering Services	General Directorate of Highways, 10th Regional Directorate	General Directorate of Highways, 10th Regional Directorate	Tunnel 8	L = 130,00 meter single tube highway tunnel
68	Yağlıdere (Sebinkarahisar-Aluera) Sep. 2nd Section Highway Etude Project Engineering Services	General Directorate of Highways, 10th Regional Directorate	General Directorate of Highways, 10th Regional Directorate	Tunnel 9	L = 430,00 meter single tube highway tunnel
69	Yağlıdere (Sebinkarahisar-Aluera) Sep. 2nd Section Highway Etude Project Engineering Services	General Directorate of Highways, 10th Regional Directorate	General Directorate of Highways, 10th Regional Directorate	Tunnel 10	L = 930,00 meter single tube highway tunnel
70	Ankara-Izmir Rapid Railway Project Ankara(Polatlı)-Alyonkarahisar Section Km:149+828-149+936 Steel Bridge Project	TCDD General Directorate	Sigma-Yda-Makimsan-Burkay Joint Venture	Steel Bridge	L = 106, 00 steel bridge
71	Dalaman International Airport Terminal Viaduct, Connection Roads and Intersections Project	State Airports Authority	Yda Group	Viaduct	L = 800 metre, W=various viaduct

**COMPLETED STRUCTURE PROJECTS**

NO	NAME OF THE PROJECT	APPROVAL AUTHORITY	EMPLOYER	STRUCTURE TYPE	DETAILS OF THE STRUCTURE
72	Sinop-Ayancik-15. Region Border Highway Etlude Project Engineering Services	General Directorate of Highways, General Directorate of Highways 7th Regional Directorate	General Directorate of Highways, General Directorate of Highways 7th Regional Directorate	Bridge 1	L = 200,00 meter W=2 x 13,00 meter 5 spanned highway bridge
73	Sinop-Ayancik-15. Region Border Highway Etlude Project Engineering Services	General Directorate of Highways, General Directorate of Highways 7th Regional Directorate	General Directorate of Highways, General Directorate of Highways 7th Regional Directorate	Tunnel 1	L = 2535,00 meter double tube highway tunnel
74	Sinop-Ayancik-15. Region Border Highway Etlude Project Engineering Services	General Directorate of Highways, General Directorate of Highways 7th Regional Directorate	General Directorate of Highways, General Directorate of Highways 7th Regional Directorate	Tunnel 2	L = 2120,00 meter double tube highway tunnel
75	Sinop-Ayancik-15. Region Border Highway Etlude Project Engineering Services	General Directorate of Highways, General Directorate of Highways 7th Regional Directorate	General Directorate of Highways, General Directorate of Highways 7th Regional Directorate	Tunnel 3	L = 3500,00 meter double tube highway tunnel
76	Bayburt City Crossing Bridge	General Directorate of Highways, General Directorate of Highways 10th Regional Directorate	Bayburt Group	Bridge	L = 240,00 meter W=2 x 13,00 meter 6 spanned highway bridge
77	Antalya-Kemer-Kumluca State Highway, Sarıören Tunnel (Between Km:50+630-51+300 )	General Directorate of Highways, General Directorate of Highways 13th Regional Directorate	General Directorate of Highways 13th Regional Directorate	Sarıören Tunnel	L = 670,00 meter double tube highway tunnel (including electro-mecanic projects)
78	Fethiye-Dalaman-2nd Region Border Highway, Yanıklar Tunnel (Between Km:31+300-33+000)	General Directorate of Highways, General Directorate of Highways 13th Regional Directorate	General Directorate of Highways 13th Regional Directorate	Yanıklar Tunnel	L = 1800,00 meter double tube highway tunnel (including electro-mecanic projects)



Tanjant Engineering & Consultancy Inc.

Mutlukent Mahallesi 2065. Sokak No: 6  
06800 Ümitköy / Ankara

Phone 0312 234 14 50 Fax 0312 234 14 60  
E-Mail info@tanjantmuhendislik.com



Kalite Yönetim Sistemi  
TS EN ISO/IEC 17021-1  
AB-0015-YS



[www.tanjantmuhendislik.com](http://www.tanjantmuhendislik.com)